

# LAB/OFFICE SUBLEASE AVAILABLE

## 800 W. Baltimore Street

University of Maryland - **BioPark**

Baltimore, Maryland 21231



**LOCATION** .....800 W. Baltimore Street  
Baltimore, Maryland 21231

**BUILDING** .....245,411 square feet

**AVAILABLE**.....5,000 - 12,877 Sq. Ft.

**BASE RENTAL RATE** .....\$30.50 NNN

**PARKING**.....Covered Spaces @ \$150.00/mo

### FEATURES

- Existing Lab space includes:
  - 4 chemical fume hoods
  - Tissue culture suite
  - Autoclave / Glass wash
  - Manifoldd gasses to benchtops
- Existing Office space includes:
  - Reception area
  - 21 hard-walled offices / 26 cubicles
  - 3 conference rooms
  - Kitchenette
- Significant upgrades to core building infrastructure beyond typical office building
- Convenient access to I-95

**For further information, please contact:**

**Matt Brady**  
301-337-4715

**Robert Scheer**  
301-337-4700

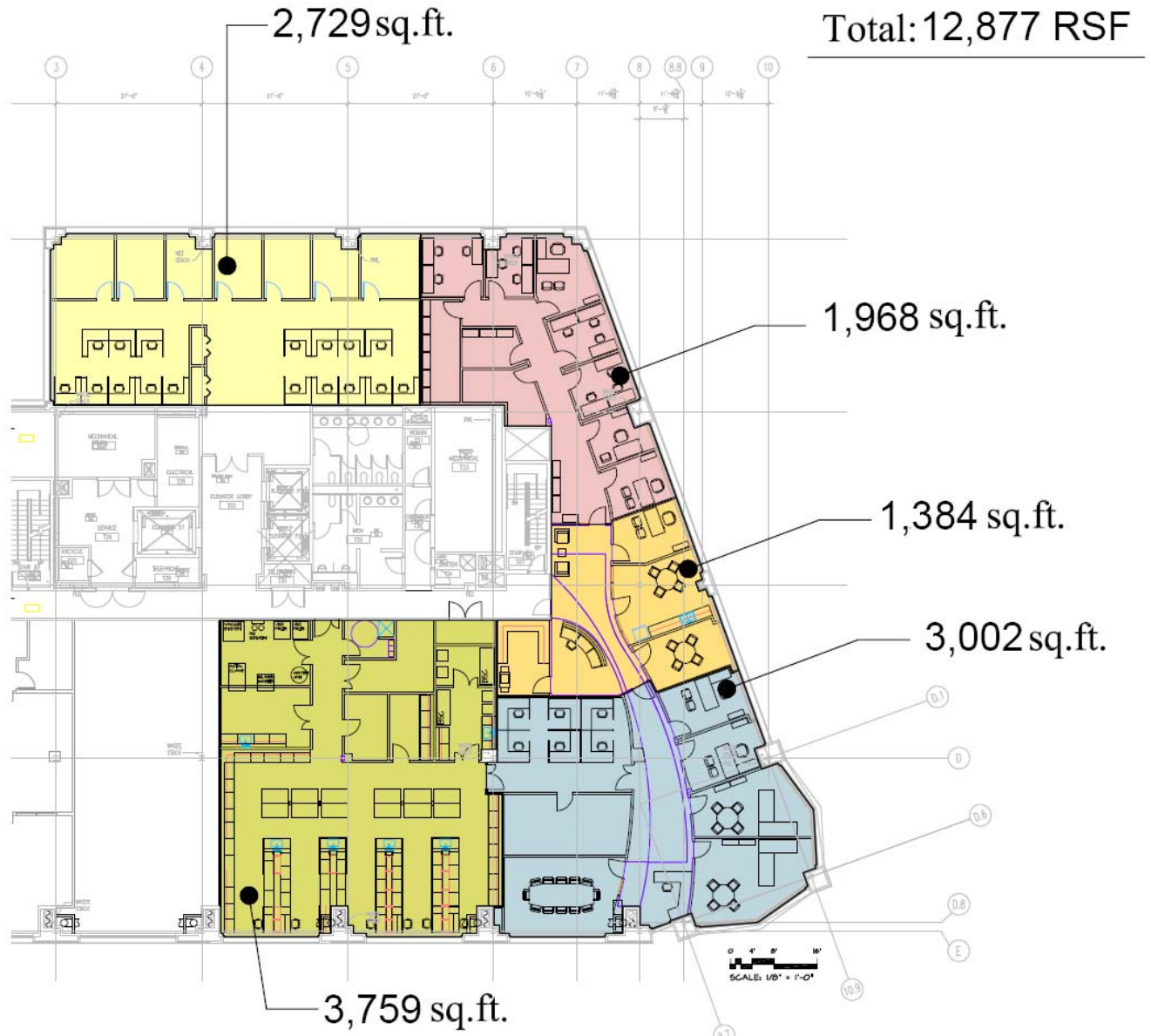


9713 Key West Avenue, Suite 250 ■ Rockville, Maryland 20850 ■ 301.337.4700 ■ Fax: 301.337.4701

800 W Baltimore Street  
Baltimore, Maryland 21231



## Floor Plan



For further information, please contact:

Matt Brady  
301-337-4715

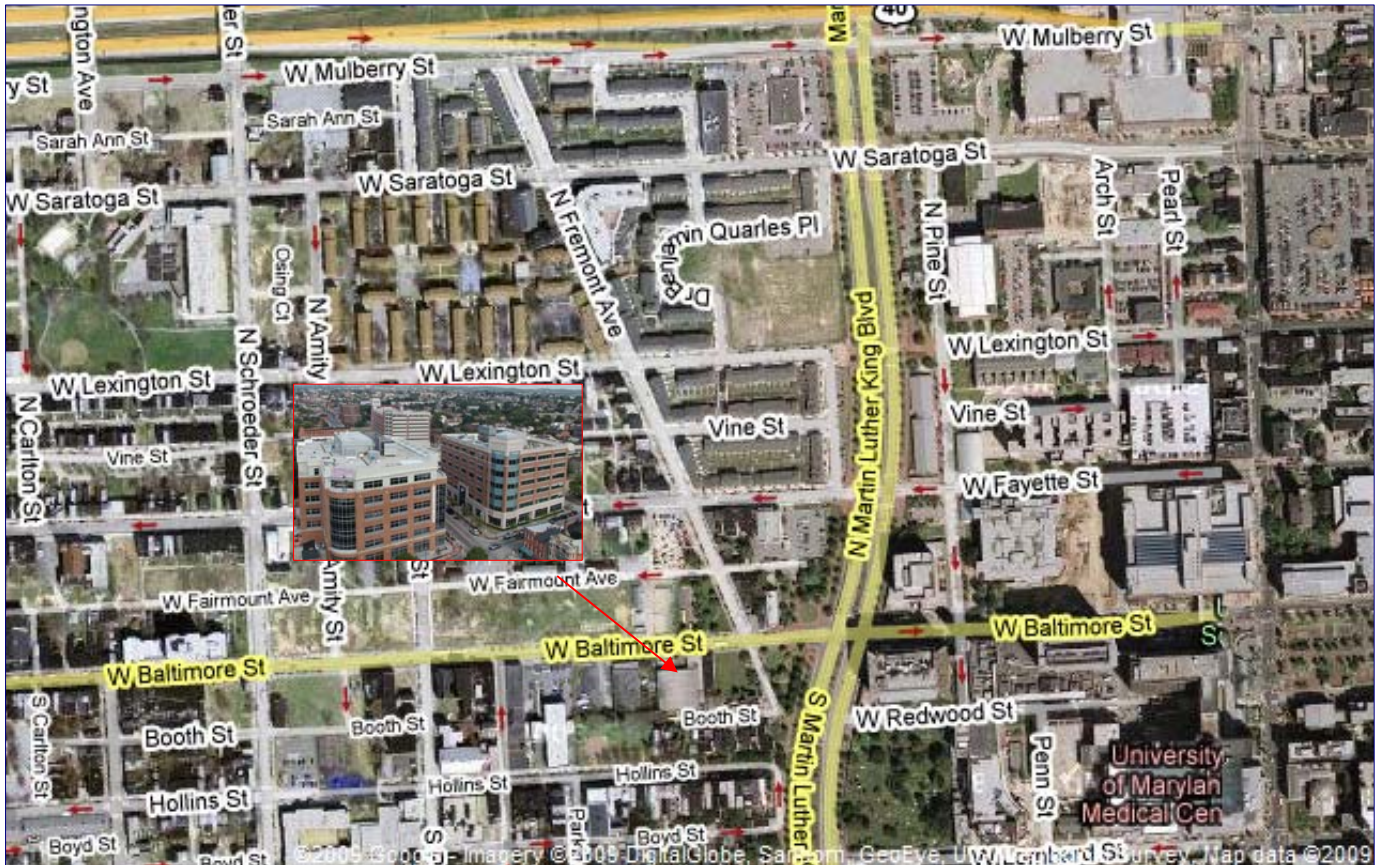
Robert Scheer  
301-337-4700

 **Scheer Partners**  
A Reputation for Results

9713 Key West Avenue, Suite 250 ■ Rockville, Maryland 20850 ■ 301.337.4700 ■ Fax: 301.337.4701

# 800 W Baltimore Street

Baltimore, Maryland 21231



For further information, please contact:

Matt Brady  
301-337-4715

Robert Scheer  
301-337-4700

 **Scheer Partners**  
A Reputation for Results

9713 Key West Avenue, Suite 250 ■ Rockville, Maryland 20850 ■ 301.337.4700 ■ Fax: 301.337.4701